

proactive
young people

supporting with employability & enterprise

Newsletter

k

Tuesday 4th March 2025

**MK STEM
AWARDS**



Powered by **EVENTS TOGETHER**

**2025
FINALISTS**



IN THIS ISSUE

- **INDUSTRY SPOTLIGHT** 3
- **TEAM NEWS** 4
- **ENTERPRISE EVENTS** 5
- **CELEBRATIONS & THANK YOU'S** 15
- **INDUSTRY PARTNERSHIPS** 16
- **STUDENT OPPORTUNITIES** 17
- **LATEST INDUSTRY FEEDBACK** 18
- **UPCOMING EVENTS** 19
- **CONTACT US** 20

Love
Coupon

A

b

A

c

All you need is love.
But a little chocolate
now and then
doesn't hurt.

CHARLES M. SCHULZ



INDUSTRY SPOTLIGHT



**Hi, I'm a self-employed
leadership coach and
youth mentor
based near Tring**

What do I do? I help businesses explore how AI can work for them. I am a Design Thinking Coach which means I help leaders and teams explore their emotional intelligence to put humans first when designing systems and solutions. I also visit schools for STEM talks and speed networking events. When I am not mentoring, I love writing and currently working on my new book - The Forgotten Algorithm.

If you're interested in how my workshops or just fancy a chat my details are below:

07876721932

or book a Zoom here:

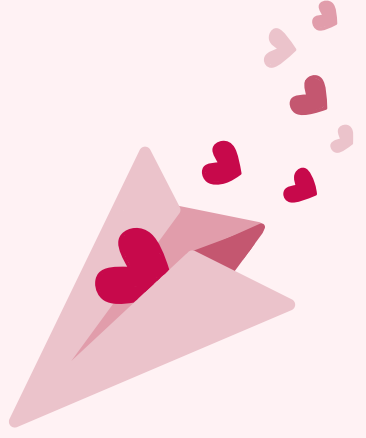
<https://calendly.com/paulrussell/30min>

proactive young people

supporting with employability & enterprise

Team News

Our Christmas & New Year Highlights!



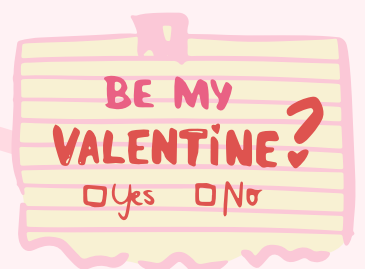
e

A

e

e

3



proactive
young people

ENTERPRISE EVENTS



0 00U 0 0 0 0
A A
A A



proactive
young people

ENTERPRISE EVENTS



ZA
Z Z N Z Z
A Z Z AOATZ Z Z
A A



proactive
young people

ENTERPRISE EVENTS



WA
WWS W W WW
W W M WS N
W W
A A



proactive
young people

ENTERPRISE EVENTS



YA
YYT Y Y Y Y
A Y Y AOATY Y Y
T A A



proactive
young people

ENTERPRISE EVENTS



WA
WWS W W WW
W ASN W N
W W
A A

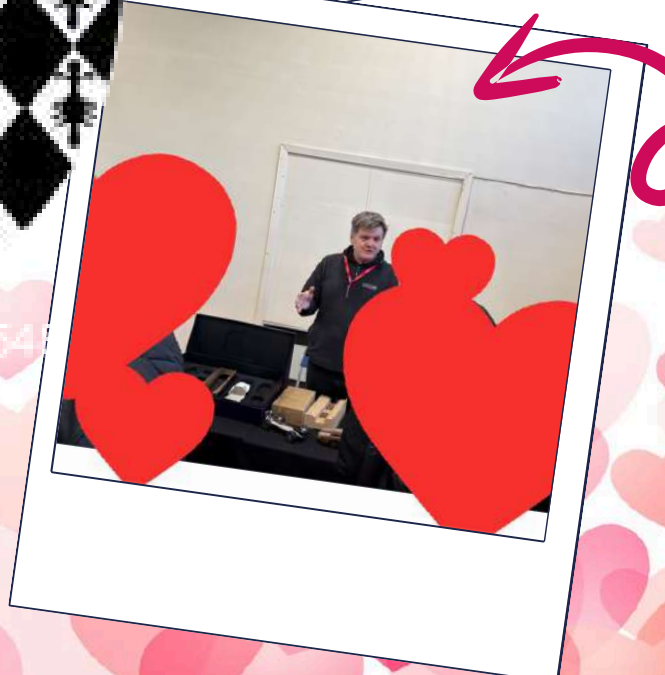
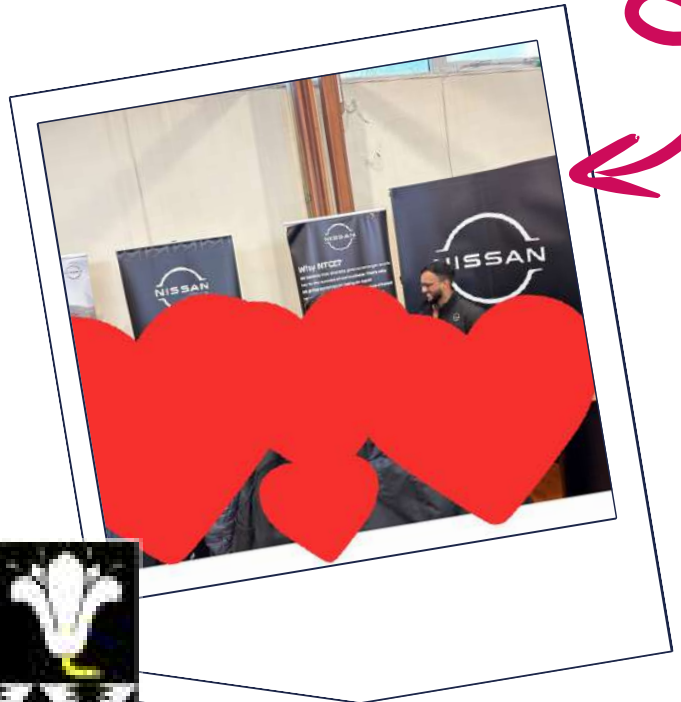


THE RADCLIFFE SCHOOL
INSPIRE AND ACHIEVE



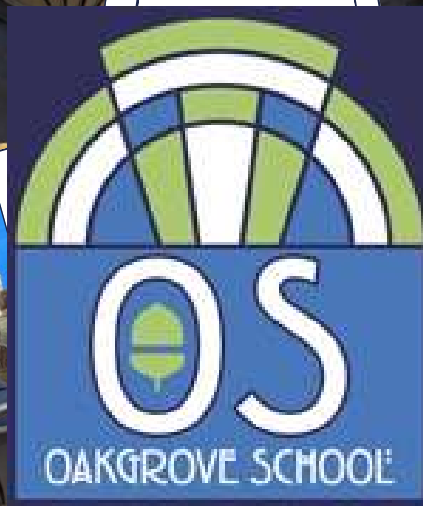
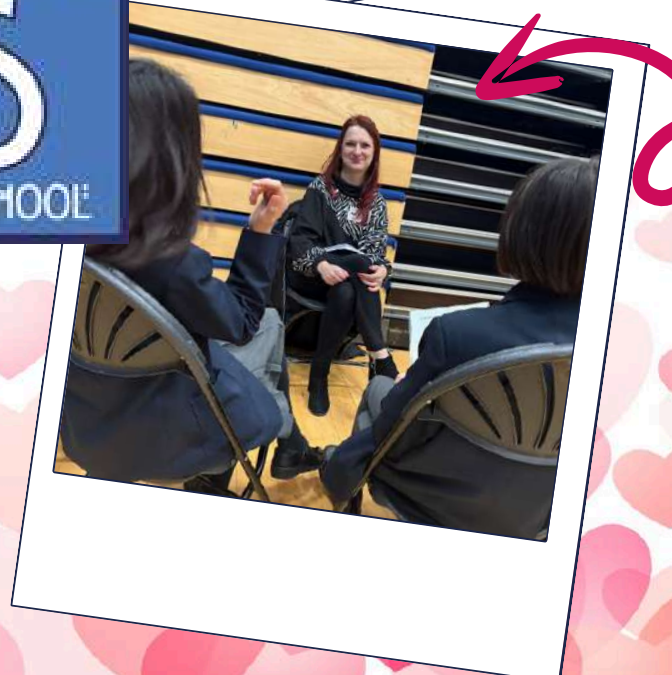
ENTERPRISE EVENTS

LO OA
A SA A SA O M A
A SA O M O O M
L AM O
A A



proactive
young people

ENTERPRISE EVENTS



WA
WWS W W WW
A WANASW W W
&VM A

proactive
young people

ENTERPRISE EVENTS



2A
2 2 0 2 2
2 2 P 2 2 2A
20 A



Etone College
'PROGRESS FOR ALL'



proactive
young people

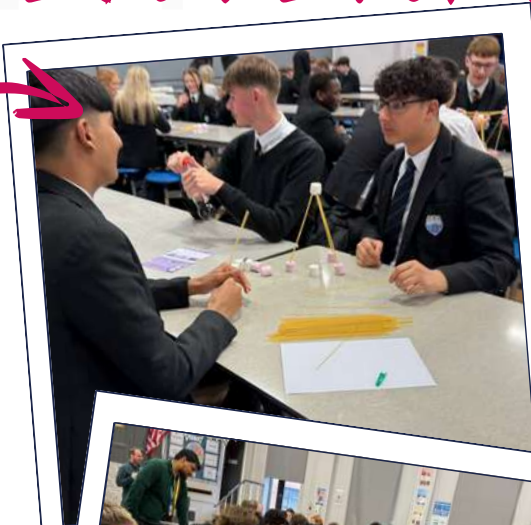
ENTERPRISE EVENTS



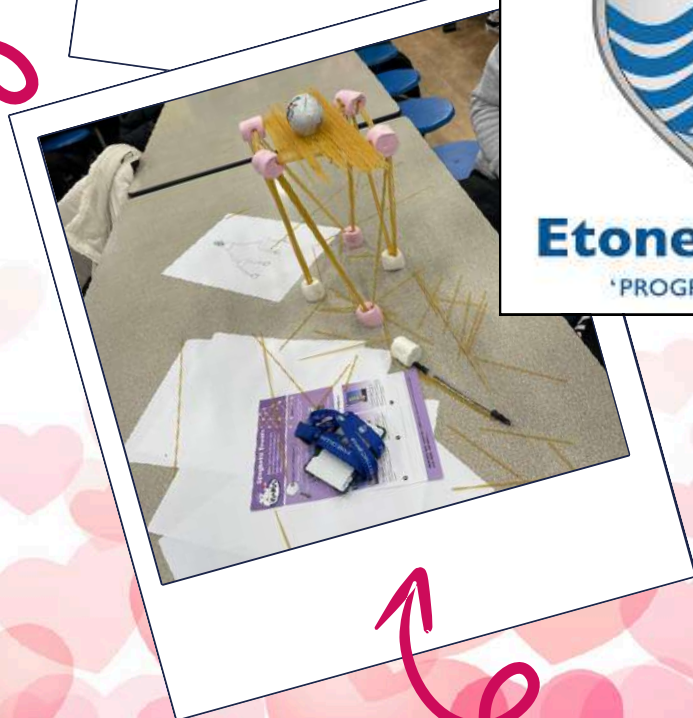
00U 0A 0 0 0 0
0 P 00U U
00 A

proactive
young people

ENTERPRISE EVENTS



2A
2 2 0 2 2
2 2 P 2 2 2A
20 A



proactive
young people

supporting with employability & enterprise

TIME TO CELEBRATE YOU!

**Proactive Young People C.I.C.
have collaborated with:**

573 AMAZING BUSINESS VOLUNTEERS!

**and together we have inspired &
empowered**

**7281 FANTASTIC STUDENTS ACROSS
YEARS 3 TO 13!**

**WELL DONE EVERYBODY
& THANK YOU!**



Bedfordshire Hospitals
NHS Foundation Trust

STUDENT OPPORTUNITIES



Nurturing The Next Generation Of Healthcare Talent





STARTING
SPRING
2025

The Health and Care Academy provides students with an opportunity to see what it would be like to work in the NHS and learn about the roles and responsibilities of different healthcare professionals.

The Academy runs alongside your academic studies and will help accumulate skills such as time management, resilience and self-awareness.

TOPICS COVERED

- Different Nursing Pathways
- Medicine and other Science based Roles
- Working in Allied Healthcare Professions
- Midwifery, Neonatal and Paediatric Services
- Life skills Program
- Careers Program



Follow -US-  
bedshealthandcareacademy@bedsft.nhs.uk

REGISTER NOW 



NHS

**Milton Keynes
University Hospital**

NHS Foundation Trust

STUDENT OPPORTUNITIES



Open Doors, delivered by **Build UK**, returns from
Monday 17 – Saturday 22 March 2025

Bookings opened Monday 13 January 2025

The event, supported by **CITB** and **Go Construct**, is aimed at young people (14–18-year-olds) and career changers. Around 140 events are currently on offer, available to view on the **Interactive Map**, with more being added every day, and over 200 are expected by **#OpenDoors25**.

Open Doors takes visitors behind the scenes to showcase the fantastic range of careers available in the UK construction industry. The construction projects taking part range from houses to skyscrapers, with manufacturing facilities, offices and training centres also opening their doors to demonstrate the off-site roles across the sector.

When booking your placement through the interactive map, you'll also get direct access to the host. The host will be able to provide you with a visit brief, Gatsby Benchmark measurements, and a risk assessment, supporting you with visit planning. Places are assigned on a first come, first served basis, and early booking is encouraged.

If you have any queries, please email info@opendoors.construction

w

w

w

w

w

i

w

a

w



proactive
 young people

INDUSTRY FEEDBACK

a

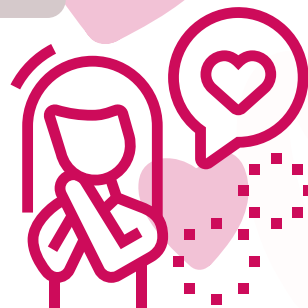
w

w

t

w

,





EVENTS - WHAT'S COMING UP?

Northamptonshire / Bedfordshire / Buckinghamshire

| | | |
|--|--------------------------|---------|
| Years 7,8 & 10 Speed Int Event | Oakgrove School | 28.2.25 |
| Years 10 & 11 Beyond Wootton Upper School Fair | Wootton Upper School | 28.2.25 |
| Year 10 Speed Interviewing Event | Milton Keynes Academy | 5.3.25 |
| Year 13 Employerbility Event | Wootton Upper School | 13.3.25 |
| Years 7,8 & 10 Speed Event | Oakgrove School | 14.3.25 |
| Year 9 Speed Event | The Radcliffe School | 25.3.25 |
| Year 10 & 11 Parents & Business Networking Event | Milton Keynes Academy | 26.3.25 |
| Year 12 & 13 Employerbility Event | Wootton Upper School | 26.3.25 |
| Year 7 Speed Interviewing Event | The Radcliffe School | 29.4.25 |
| Year 10 Speed Interviewing Event | Wootton Upper School | 29.4.25 |
| Year 7 Speed Interviewing Event | Shenley Brook End School | 6.5.25 |

Warwickshire

| | | |
|-----------------------------------|-------------------------|---------|
| Year 7 Enterprise Challenge Event | Rugby High School | 26.2.25 |
| Year 9 Enterprise Challenge Event | Studley High School | 26.2.25 |
| Year 8 Speed Interviewing Event | Rugby High School | 6.3.25 |
| Year 9 Speed Interviewing Event | Sidney Stringer Academy | 18.3.25 |
| Year 10 CV Preparation | Sidney Stringer Academy | 19.3.25 |



Trading Offices:

**Proactive Young People C.I.C
Technology House
Michigan Drive
Tongwell
Milton Keynes
MK15 8HQ**

**Proactive Young People C.I.C
Dunchurch Pools Marina
Onley
Warwickshire
CV23 8AN**

**Registered office in England & Wales
C/O: TGFP Accountants
Proactive Young People C.I.C
Newbold Terrace
Leamington Spa
Warwickshire
CV32 4EA**

**Free phone: 0800 6349277
info@pypcic.co.uk**

**Registered company number: 12689710
I.O.C Reference Number: ZA813873**



@proactiveyoungpeoplecic